



# BRIEFS TO AG EDUCATORS

May 2000, Volume VIII, Issue 9

## NEW TEACHER COLUMN

*M. Susie Whittington*  
Associate Professor

### Glad You're Here!

A new group of 23 bright, young professionals completed their course requirements for agricultural and environmental education on Friday, April 28, and will join our ranks very soon! The new professionals completed student teaching this semester and are eager to begin their new careers. "We are glad you're here!"

Watch for these new faces at FFA Activities Week, Summer Conference, and PAAE events. Take time to introduce yourself, put faces with these new names, and welcome them to the profession and the professional organization.

On Monday, July 10, from 8:30-12:00, join the new and beginning teachers for, "Thoroughbred Central Integrated Curriculum" taught by Chris McCahren at Shippensburg High School. The focus of the seminar will be the integration of biology, physics, math, art and English into Agricultural Sciences. The event is sponsored by the Center for Professional Development at Penn

*(Continued on page 4)*

## IN THIS ISSUE ...

- PAGE 2 ... IF YOU TEACH SPECIAL NEEDS STUDENTS, HORTICULTURE RESOURCES, WEAVING THE WEBSITE
- PAGE 3 ... ELIO CHARELLI, 3 + 1 = SUMMER COURSES, HEARING ON ACADEMIC STANDARDS
- PAGE 4 ... CALENDAR, WANT TO USE GIS?, FFA BOARD



## Hatching a Program



*Chris McCahren and her students weigh newly hatched chicks.*

Tyrone Area High School in Blair County is not only the home of the 1999 state football champs, but it also is the site of Christine McCahren's ag science program. This is her first year at Tyrone, so she is eager to get started making the program her own. She now has only 85 students, but Miss

McCahren has initiated a curricular revision and next year will offer topic specific courses that carry science credit, which should make the agricultural science courses attractive to more students.

Right now, most of her students enter the workforce directly from high school, but in the future she envisions more students entering higher education due to the integration of science into the agriculture courses. The most popular elective course is floriculture; another curricular revision will be courses with more occupational relevance to the local job market.

Tyrone FFA is very active and students do many sales projects, public speaking competition, fairs, square dances, and they held a faculty appreciation breakfast during FFA week. Students are

*(Continued on page 4)*

## If you teach special needs students . . .

Do you teach students with special needs? "Extending Expertise on Exceptional Learners" is an institute for educators of learners with special needs. This institute will be presented by faculty from Penn State's Department of Educational and School Psychology and Special Education and offered at no cost to Pennsylvania teachers. Registration priority will be given to teams of general and special ed teachers from the same school district, especially those involved in co-teaching situations.

The dates are July 24-28 for secondary teachers. The institute's location is the Atherton Hotel, on S. Atherton St. between Beaver and College Avenues in State College. Parking is available at the hotel. The hotel accommodations, workshop, materials and meals are all being paid for by a State Improvement Grant from the Pennsylvania Department of Education. The registration deadline is May 30. For registration information, please contact Melissa Beidler at 814-863-5000 or [mub2@outreach.psu.edu](mailto:mub2@outreach.psu.edu), or view the website at <http://www.outreach.psu.edu/C&I/ExceptionalLearners/> for program information.

## Horticulture Resources



Here are some horticulture sites to enrich your class activities:

*Perry's Perennial Pages*, was recommended by one of our horticulture

faculty: <http://www.uvm.edu/~pass/perry/> The author, Leonard Perry, teaches at University of Vermont. You also can find this by searching under either the author's name or *Perry's Perennial Pages*.



The World Conservation Monitoring Center has a site where you can search for a species to see its status on the endangered list: <http://www.wcmc.org.uk/species/plants/plants-by-taxon.htm>

The American Society of Horticulture's home page is <http://www.ashs.org> and has horticultural science links, as well as a plant scientific name glossary which indexes plants by genus.



## Weaving the Website

As the Center's website continues to grow, we invite you to take a few minutes to view the Center's website at <http://AgExtEd.cas.psu.edu/center.html>

We'd like feedback on the organization (placement of pages), navigability (placement and names of links), and colors (do they help you navigate?). Or better yet, try to find us from a search engine. Do your key words find the Center's website? If you have trouble finding us with a search engine, let us know and feel free to suggest new keywords.

Last, we've added a Center Calendar to keep everyone updated. So please send dates to me at [clh4@psu.edu](mailto:clh4@psu.edu) or 814-865-4592 and I will include them on the calendar.

## 3 + 1 = Summer Courses



This summer The Center offers 4 weeks of courses for agricultural science teachers, environmental science teachers, and extension agents.

The Center's revised summer schedule shows the 3-week schedule beginning June 19 plus a new 1-week course, S.E.E. Your Way, developed for K-12 teachers about the Standards for Environment and Ecology at Shaver's Creek Environmental Center from July 17-21.

We have updated the summer course listings on our website to include the summer schedule numbers and the newest 3-credit course, S.E.E. Your Way. The Center website has a printable schedule and registration form at <http://AgExtEd.cas.psu.edu/center.html> under the "Outreach" link.

If you can't print the registration form or schedule, please contact Carol Hodes at The Center to have a copy sent. Registration by phone is available by calling 814-865-3443 with the course schedule number.

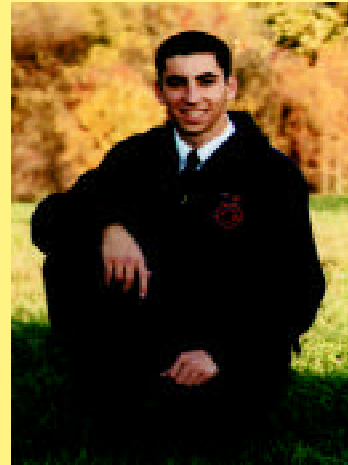
## Hearing on Academic Standards

The State Board of Education's Committee on Academic Standards has been holding public roundtable discussions on the draft Academic Standards to receive input from interested parties. Last of these roundtables and hearings will be held in the Harrisburg area on May 25. Areas of most interest to Agricultural Science teachers most likely are Science & Technology, Environment & Ecology, Civics & Government.

Anyone interested in participating should contact the State Board of Education office at (717) 787-3787 no later than May 19. Scheduling is done on a first-come, first-served basis. If unable to participate or present testimony, please submit written testimony. Written testimony will be afforded the same thoughtful consideration by the Committee as oral testimony. There is no limit for written testimony, but 25 copies are required.

Mail testimony to Peter H. Garland, Executive Director, State Board of Education, 333 Market Street, Harrisburg, PA 17126-0333 (717-787-3787 or 800-654-5984) by 4:00 p.m. on Friday, May 26. If you have questions or need more information, contact Dr. Garland. The Academic Standards are on the PDE web site at [www.pde.psu.edu](http://www.pde.psu.edu), at public libraries, and can be obtained through the State Board of Education office.

## Elio Charelli



*PA FFA's First National Public Speaking Winner*

For the first time in 72 years, a FFA member from PA took first place in the Prepared Public Speaking Career Development Event at the National FFA Convention in Louisville, KY. Elio Charelli, Jr. is a member of the H. G. Parkinson FFA Chapter at Fort Cherry High School and current state president.

True to the convention theme "Signature of Success," Elio impressed the judges with his speech, "Is There Anything Safe to Eat?" He is the first PA FFA member to be included in the final four speakers since 1965 when Dave Bechtel of Oley FFA placed fourth. For his effort, Elio received a \$100,000 scholarship from the FMC Corporation Agricultural Products Group, who sponsored the national contest, and \$350 from the National FFA Organization.

**Inside this issue--please find the Nursery/Landscape CDE Contest Score Sheet provided by Tim Mauk.**

**CALENDAR OF EVENTS.....**

- May 12..... FFA Assn. Board of Directors Meeting 301-A Ag Admin, 6:30 PM  
 May 19..... PAAE Executive Board Meeting, 301 Ag Admin, PSU, 7 PM  
 June 13-15 ..... FFA Activities Week, Penn State, University Park  
 June 14..... FFA Foundation Meeting

**TEACHER DEADLINES.....**

- May 5..... Regional Contest Quota results due to regional coordinators (i.e., public speaking, tractor driving, dairy showmanship, chapter procedure, small gas engines).  
 May 9..... FFA Week entries due at Penn State (registration forms with full payment, state authorization form, state FFA activities form, 3 copies of manuscripts for public speaking, coaching responsibility consent forms, state officer candidate applications, delegate information form, 3 copies of ag science award applicatio).  
 June 13..... Chapter Award Application due at the registration desk-FFA Activities Week-Penn State.

*(Growing cont'd from p. 1)*

busy planning their FFA annual spring banquet. Popular SAE projects are livestock, home gardening, and work experience.

In the future, there will be increased technology integration and specialized software for the new courses. Miss McCahren notes that one of the most positive factors as she builds her program is the friendly community that is always willing to help and the ready support of the other ag teachers. Although her program is only a "hatchling" right now, with McCahren's plans and continued support, the Tyrone program should experience steady growth.

**Want to use GIS ?**

Two new programs train agriculture, environmental sciences, and life science teachers in GIS techniques. First, the GIS Forum is set for 3-6 PM June 1 at the Hershey Lodge & Convention Center to discuss the State's GIS curriculum. A registration form for the June 1 forum is enclosed. Next, the PASDA K-12 EdGIS (Geographic Information Systems) Training at the Milton Hershey School, Hershey, PA is on June 14-15. The 2-day program trains teachers to use on-line GIS resources and to "test drive" the new K-12 PASDA site. Contact Mary Pat Evans at 717-540-3875 about June 14-15.

*(New Teacher cont'd from p. 1)*

State. Call Carol Hodes at 814-865-4592 or email Susie at [swhittington@psu.edu](mailto:swhittington@psu.edu) to register today! Get your registration in early for the PAAE conference. And don't forget, all new teachers' registrations are supplemented through the Center for Professional Development! Plan to attend!

**FFA Board**

Newly elected to the Regional FFA Board are:  
 Western Region,  
 Ellen Aurand - Linesville  
 Eastern Region,  
 Cecil Lohr-Manheim - Central  
 Congratulations!

Briefs to Ag Educators is a publication of the Center for Professional Personnel Development, Department of Agricultural and Extension Education, The Pennsylvania State University, 323 Agricultural Administration Bldg., University Park, PA 16802. Editors: Brent Dahlhaus, Carol Hodes and Thomas Bruening, Phone: 814-863-7876; Fax: 814-863-4753; email Carol at [clh4@psu.edu](mailto:clh4@psu.edu)

This publication is available in alternative media on request. The Pennsylvania State University is committed to the policy that all persons shall have equal access to programs, facilities, admission, and employment without regard to personal characteristics not related to ability, performance, or qualifications as determined by state/federal authorities. The Pennsylvania State University does not discriminate against any person because of age, ancestry, color, disability or handicap, national origin, race, religious creed, sex, sexual orientation or veteran status. Direct all inquiries regarding the nondiscrimination policy to the Affirmative Action Director, The Pennsylvania State University, 201 Willard Building, University Park, PA 16802-2801: Tel. (814) 863-0471; TDD (814) 865-3175.