



BRIEFS TO AG EDUCATORS

October 2000, Volume IX, Issue 10

NEW/BEGINNING TEACHER COLUMN

by: L. E. Dreibelbis, Jr. – PAAE President



The Pennsylvania Association of Agricultural Educators is pleased to wish all teachers a very successful new school

year in the profession of Agricultural Education. PAAE would like to take this opportunity to especially welcome the following new/beginning teachers to our profession. A number of these professionals are familiar to our organization with changes in their instructional sites, while others are new to the profession. We welcome each and every member.

Brent Dahlhaus, Southern Fulton; John Ewing, Octorara; Neil Fellenbaum, Penn Manor; Brendan Hoover, Williamsport; Colleen Innerst, Big Spring; Dan Overdorf, Chambersburg; Kristia Pontius, Greenwood; Tracey Sauder, Shippensburg; Mike Shultz, Middleburg; and Thad White, Forbes Road.

This year, Dr. MeeCee Baker will be coordinating the new teacher-mentoring program for the Pennsylvania Association of Agricultural Educators, and I would like to extend our sincere thanks to both MeeCee and the team of mentors. Those serving as first year mentors for Pennsylvania include Kristia Pontius, Doug Gayman, Larry Way, and Carey Kalupson.

(continued on page 4)

IN THIS ISSUE...

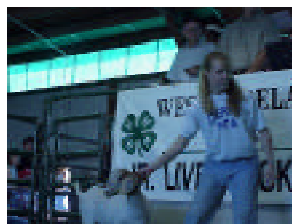
PAGE 2... THE COUNCIL RELEASES CURRICULUM, IDEAS UNLIMITED - AN INEXPENSIVE HYDROPONICS SYSTEM

PAGE 3... INTRODUCING GAIL RISHEL, LET YOUR VOICE BE HEARD

PAGE 4... CALENDAR, VALUE ADDED DATABASE

MARKETABLE INSTRUCTION

Derry Area HS - Derry, PA



Kristen Pfeifer, Reserve Market Goat, Westmoreland County 4-H & FFA Livestock Sale



John Bierbower, Derry Area HS AG Educator

Take a minute and look around you. What types of products are being marketed? John Bierbower and Roy Campbell pride their Derry Area HS Agricultural Education program on the fact that all of their labs are production oriented. Meaning that students produce a marketable product as a means of instruction. As a result, the AG Mechanics labs are almost entirely self-sufficient because the students produce products that are then sold to local community members. Other labs include project animals raised in the school barn, greenhouse plants, food products, and floral design projects.

The program is up-to-date with a new computerized greenhouse, 14 classroom computers connected to the Internet and a point of sale system. Because students have access to and training in using these technologies, John and Roy are able to convey the industry needs to their program. "Many community members hire our students. In return, this helps to maintain a positive attitude about the Agriculture/Horticulture program within the community."

(continued on page 2)

Ideas Unlimited . . .

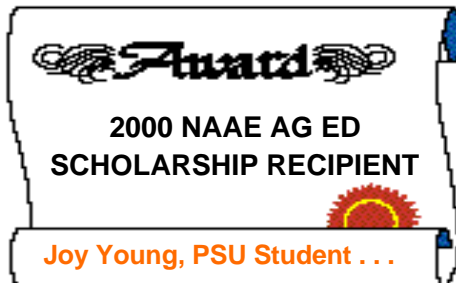


. . . An Inexpensive Hydroponics System

Realizing that hydroponics has emerged as a viable subject for instruction in agriculture, John Mulcahy, agriculture teacher at Peoria High School in Peoria, Arizona, has developed a hydroponics system that is less expensive than many commercial systems. Students learn a variety of skills while they build the system; then after building the units, students are able to grow a variety of vegetables.

The design includes the use of 2" PVC pipe with 1 7/8" holes on top. The solution enters the back of the pipe as it flows into a reservoir. A pump then returns the solution to the back of the pipe. Teaching plant growth and development is made easy, as students can actually see the plant parts and modify nutrient levels of the solution.

For more information about Mulcahy's award winning teaching ideas, contact him by calling (623) 486-6323. For more information about the NAAE Ideas Unlimited award program, contact the NAAE Office by calling (800) 772-0939 or sending e-mail to naae@teamaged.org.



. . . will receive a \$750 check and a framed award certificate at the ATA/National Student Teachers Conference held in conjunction with the National FFA Convention.

Joy will be student teaching this spring at West Snyder High School. She currently serves as the Collegiate FFA President and is a member of the ATA and PAEE organizations.

We congratulate Joy on her award and wish her the best of luck with her future endeavors.

(Marketable Instruction cont'd from p 1)

Currently, there are 105 students enrolled in the Derry Area HS program. On any given day, John and Roy will teach Introduction to Agriculture, Introduction to Horticulture, Technology Agriculture, Greenhouse, Floral Design, Power Mechanics, and AG/Horticulture Science. These hands-on opportunities combined with the advanced technology are not only preparing students for the industry but also creating leaders.

In the next few years, John Bierbower and Roy Campbell hope to improve the hydroponics and aquaculture labs from experimental phase to production status. They also set a goal to increase horticulture and food science projects at the Westmoreland County Fair.

Need Money?

Do you have a student interested in studying Food Science or Food Engineering in college? The Keystone Section of the Institute of Food Technologists is offering a scholarship.

If you have any questions, please contact Renee Breen at (717) 737-5739 or by e-mail at Rbreen82@aol.com.

THE COUNCIL RELEASES CURRICULUM

New products available: *Aquatic Resources for Educational Purposes (AREP)*, *Tilapia Reproduction & Growth in Educational Environmental (TIL)*, and *Aquaculture Education Electronic Instructional Library CD-ROM (AQUALIBCD)*. The CD-ROM will be available after November 1, 2000.

The aquaculture curriculum development initiative has been completed with the release of some new materials. Since all project grant funds have been depleted, these materials can no longer be distributed free of charge. The Council is now duplicating and distributing these materials at prices consistent with other PGS projects.

(See *Instructional Materials Order Form Insert*.)



Introducing... Gail Rishel

Gail Rishel began her career by looking for a well-rounded basis in agriculture, which led to a Bachelor's Degree from Penn State with a major in Agricultural Science and minors in Extension Education and International Agriculture. Her intention was to work somewhere in the extension field.



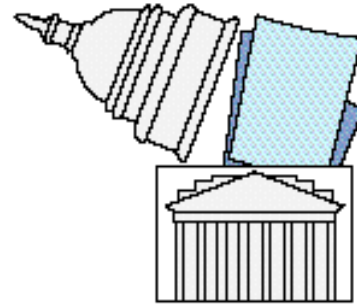
As we all know, plans are often over ridden by unseen forces. Gail decided to continue her education by pursuing a Master's Degree in Agricultural Education at Penn State. She was led to concurrently procure her teaching certificate in both Agriculture and General Science.

Following her student teaching in Northern York County High School, she received a call from Dover High School to fill a dual role of Agriculture and Earth Science Educator. Gail accepted the position and is now in her third year. She believes that her years of success are owed to Nick Stollar and Ron Weaner who have made the transition into the dual role both interesting and exciting.

The PDE Center for Professional Development welcomes Gail Rishel to the Agricultural Education Family and wishes her continued success!

BUSY TEACHERS

The Busy Teachers Web site at <http://www.ceismc.gatech.edu/busyt> gives teachers direct access to the best high content educational sites. Carolyn Cole, at the Center for Integration of Science, Mathematics, and Technology at Georgia Tech, developed this site.



Let Your Voice be Heard

The U.S. House of Representatives' mark-up of the FY 2001 agriculture appropriations bill includes \$600,000 for the Secondary Ag Ed Challenge Grants program (which may just be called something such as "competitive grants for secondary and 2-year postsecondary agriscience and agribusiness education" in the bill rather than an "official" program name). This reflects a \$100,000 increase over the funding we have received for the program in both FY 1999 and FY 2000!

The U.S. Senate mark-up of the FY 2001 agriculture appropriations bill includes \$1 million for the Secondary Ag Ed Challenge Grants program. This reflects a doubling of the funding we received in FY 1999 and FY 2000!

We anticipate that the House and Senate subcommittees on ag appropriations will go to conference committee very soon to finalize the bill for FY 2001. It is important that you contact your Members of Congress immediately and encourage them to approve the Senate's funding level for this program. To your Senators, thank them for the support and encourage them to hold tight to their funding level in conference committee. To your Representatives, thank them for their support and encourage them to accept the Senate's funding level for this program.

If your Members of Congress (House and Senate) serve on the respective ag appropriations subcommittees, it is absolutely critical that you contact them immediately. If your Members of Congress (House and Senate) do not serve on the respective ag appropriations subcommittees, it is important that you request that they express their support for the \$1 million funding level to their colleagues who serve on the subcommittees.

Should you have questions or desire further information, please contact the NAAE office by calling (800) 772-0939, extension 4366, or sending e-mail to jjackman@teamaged.org.

CALENDAR OF EVENTS.....

- October 10 PAAE Western Region meeting at Greensburg Hoss's, 6:00 p.m.
 October 12 New Technologies Curriculum Workshop, evening, Mifflinburg High School
 October 17 FFA Fall Conference for Leadership Development at University Park
 November 2 Eastern PAAE, Twin Valley High School, Elverson, PA, 6:00 p.m.
 November 7 FFA South Central Region, Regional Keystone Star Selection with SAE Books,
 Farm Show Complex, Room A-1 or B, 1:00-4:00 p.m.
 November 11 Food Science Workshop, Conrad Weiser High School, 8:30 a.m.
 December 2-6 NAAEE National Convention, San Diego
 December 7-10 ... ACTE National Convention, San Diego

TEACHER DEADLINES.....

- October 30 Farm Show Market Swine due to Farm Show Office, Rate gain due
 November 1 Farm Show Window Exhibit, AG ED Display Exhibit & School Demo entries
 Due to VSO Office
 November 3 Keystone FFA Degree Applications Due to Regional Coordinators
 November 5 Farm Show Entries Due to Farm Show Office (dairy, poultry, breeding animals)

(New/Beginning... Cont'd from p 1)

With the resignation of Dr. M. Susie Whittington, the Pennsylvania State University's New Teacher Induction Program will be temporarily coordinated as a team effort consisting of Tiffany Roberson, Dr. Thomas Bruening, and Dr. Carol Hodes, pending the hiring of a professor member to replace Dr. Whittington. Questions regarding the New Teacher Induction Program can be directed to the attention of one of the team members at the Department of Agricultural and Extension Education or Dorothy Thomas at (814) 863-7852.

Have a GREAT year !!!!

VALUE ADDED DATABASE

The Culinary Network, a Doylestown, PA, food information company; the Rodale Institute Experimental Farm in Kutztown, PA; and the USDA Rural Development Office in Harrisburg, PA, are working together to create a computer database



of farms in Pennsylvania that are producing "Value Added Products."

Valued added products are any product(s) whose main ingredient(s) are grown on or produced from an individual farm. They are non-perishable, packaged and marketed under the individual farm's label.

If you are not a farmer with value added products, but would like to help create this database, simply send the information (business card, product list, etc.) of your local farm value added producers to: Jim Cochran, TCN, 350 South Main Street, Suite 207, Doylestown, PA 18901. If you have any questions, you may call Jim at 215-230-5581 or fax him at 215-230-5586 or e-mail him at culinary@nmi.com.

The goal is to help save family farms. The creation of a Pennsylvania farm produced value added product database is one step toward that goal.

Briefs to Ag Educators is a publication of the Center for Professional Personnel Development, Department of Agricultural and Extension Education, The Pennsylvania State University, 323 Agricultural Administration Bldg., University Park, PA 16802. Editors: Tiffany Roberson, Carol Hodes and Thomas Bruening. Phone: 814-863-7876; Fax: 814-863-4753; email Tiffany at tmr175@psu.edu

This publication is available in alternative media on request. The Pennsylvania State University is committed to the policy that all persons shall have equal access to programs, facilities, admission, and employment without regard to personal characteristics not related to ability, performance, or qualifications as determined by state/federal authorities. The Pennsylvania State University does not discriminate against any person because of age, ancestry, color or disability or handicap, national origin, race, religious creed, sex, sexual orientation or veteran status. Direct all inquiries regarding the nondiscrimination policy to the Affirmative Action Director, The Pennsylvania State University, 201 Willard Building, University Park, PA 16802-2801: Tel. (814) 863-0471; TDD (814) 865-3175.